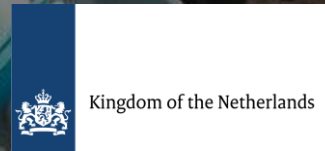
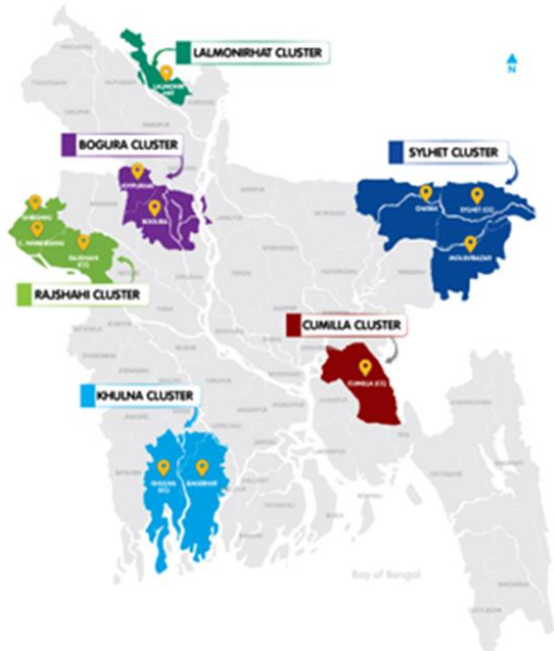


BUILDING WASH INTO IWRM

15 October 2023



Sustainable Urban Water Cycles Project



Duration: 2022-2027

Supported by the Embassy of the Kingdom of the Netherlands

Sanitation services

Solid waste management

Greywater management

Flood & drought management

Replication of best practices by government

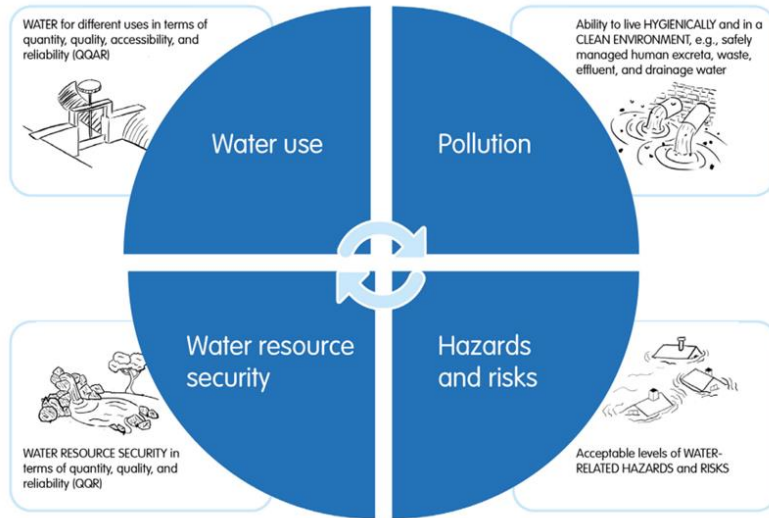
Strengthening monitoring system

Leveraging private funding

Objectives

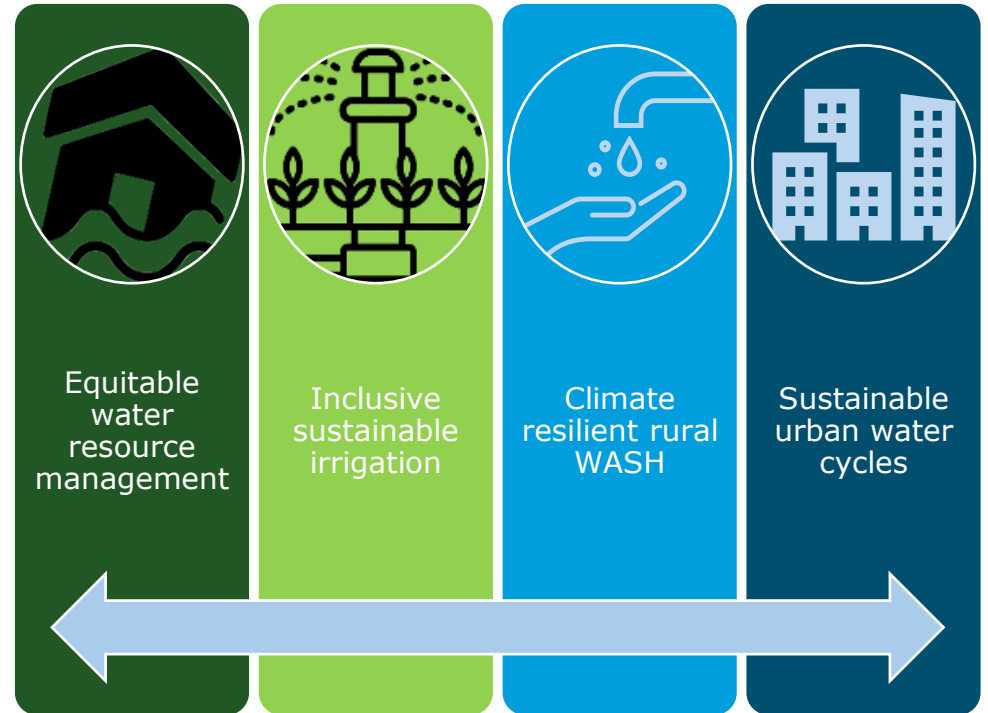
- Enhance capacity of cities to lead & plan urban services
- Establish inclusive financing models through Public Private Partnerships
- Identify and prioritise users' behaviour for demand creation through institutionalisation
- Promote professionalisation of services linked to key performance indicators
- Improve service efficiency & accountability through effective monitoring

Translating to water sector



Four dimensions of water security

Bangladesh



What are the climatic, water management and governance/institutional challenges you are facing in your project/programmatic (WASH) are?



Coordination and **exchange of information** with **entities responsible** for water resource management and disaster risk reduction.



Effective **monitoring system, information updated** and discussed with relevant stakeholders.



Development of a plan to reach the entire area/city and guarantee **human and financial resources**.

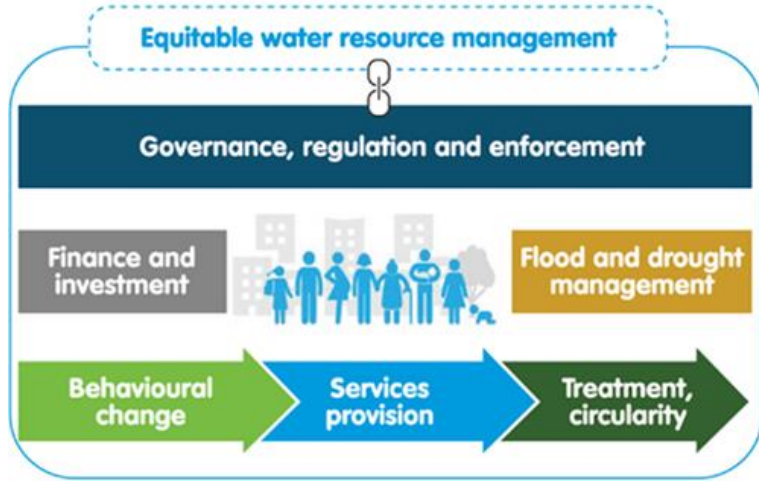


Cities with an **overview of the natural and built drainage system as well** as its weak points in the city (including areas prone to waterlogging).



Influence of **socially excluded and/or low-income groups** in municipal or ward level decision making about services for water supply, sanitation, solid waste and drainage.

How are you addressing in those challenges?



Information updated and sharing with relevant stakeholders.



Enforcement and regulation



Support to development of a plan/
Financial resources.



Capacity development of staff members
on various topics such as GESI, city
strategy, monitoring.



What are the remaining challenges/issues untouched?

The **equitable** water resource management.

Equity and governance first in water resource management.

- Integrated institutionality for water resources.
- Democratisation of data, planning and decision making.
- Strengthening local sectoral accountability.
- Water resource investment and finance.

The SNV logo is located in the top left corner of the image. It consists of the letters "SNV" in a bold, blue, sans-serif font, with a horizontal line underneath the letters.

Thank you!

