

Challenges in Building WASH into IWRM in Bangladesh and international contexts

“Experience of Max Foundation in Bangladesh



Engr. Riad Imam Mahmud
Country Director , Max Foundation Bangladesh

The contents

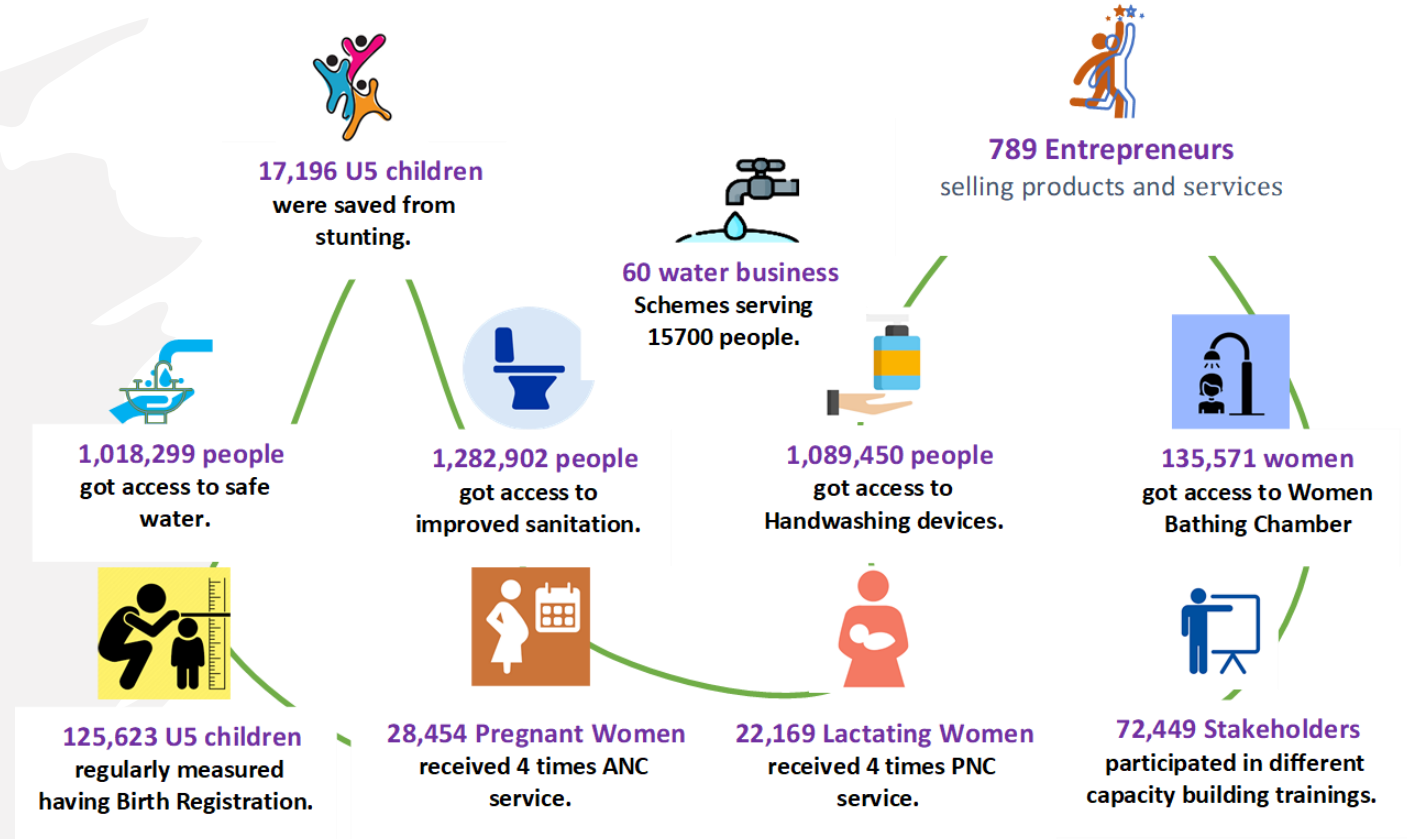
- What are the climatic, water management and governance/institutional challenges you are facing in the our Project?
- How you are addressing these challenges?
- What are the remaining challenges/issues untouched?



Max Foundation Catalysing impact on child health

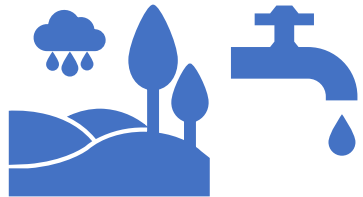
- Max Foundation is a Dutch based INGO works for children using business driven and data driven approach to ensure a healthy start of every child life.
- Key Focus
 - Water, Sanitation and Hygiene (WASH)
 - Food security and Nutrition (FNS)
 - Mather and Adolescent Health (MAH)

Our major achievement on the ground



Our work with WASH

Worked since 2005 in south coastal areas, Hill tracts, Haors, Barind, Polders and Islands (Barisal , Patuakhali, Bhola, Khulna, Satkhira, Bandarban, Jessore, Chapinawabgonj, Gaibandha, Bogura, Kurigram, Lalmanirhat, Sunamgonj)



Safe Water:

Hand Tubewells : 29815

Piped water: 71

Solar Powered Irrigation: 5 (50 Acre Each)



Sanitation

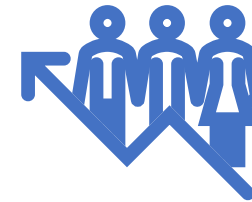
Improved Toilet : 202,896

Handwashing MaxiBasin: 283,449

Women Bathing Chamber: 10,488

LGIs /Ups: 140

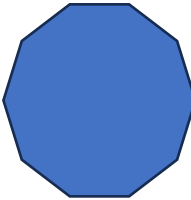
Communities: 7750



Entrepreneurs

Total WASH Entrepreneurs : 958

Cumulative Turnover(2018-2023) :
USD 3.6 Million (USD 3757 per capita)



Challenges Overview : WASH

Climatic Challenge

Water Scarcity in Barind (low yield in dry season

At least 10% hand tubewells (mainly in Satkhira and Khulna) are intruded by **excessive saline** (by 2018)

Water logging in Satkhira, Manirampur, Dumuria impacting the progress in sanitation and hygiene

Flash flood damaged more than 3200 HH lost latrine & handwashing Basin and 1064 in Chattak and Kurigram

Cyclones destroys more than 15% of the improved toilets every year

Water Management Challenges

Loss **Asset** and **Human resources** ,Increased **Investment** (assumed more than 20% in last 5 years) , **Technical improvement** and **innovation cost high**
Entrepreneurs face loss and dropout of 30% local Entrepreneurs; Increase cost for water quality management

Governance/Institutional Challenges“

Creating systemic Risk

Additional Budget Needs in LGIs

Increased demand for additional funds /Financing

Community Engagement, Equity and Access

We are addressing the Challenge

Investing more on New solutions and Innovation

Educating Community, Entrepreneurs and Local Civil Societies on Climate change adaptation and management

Using Data to drive the projects and Change

Focusing Investment in Business for WASH


Integrating with Other Programs (Nutrition, Health care)

Example: Healthy Village , MaxTapWater, MicroGrow



A large orange circle on the left side of the slide, containing the text "Remaining challenges/issues untouched". A smaller blue circle is positioned at the bottom-left edge of the orange circle.

Remaining challenges/issues untouched

- 
- A decorative graphic consisting of several yellow, curved, brush-stroke-like lines arranged in a semi-circular pattern on the right side of the slide.
- Managing Surface water as a source of Domestic Water supply
 - Treatment Technologies
 - Micro Plastic Pollution
 - Saline treatment technology for drinking water
 - Investment opportunity
 - Policy Improvement to access Private sector into WASH
 - Financing capacity Development
 - Technical and Human resources development



Thank You