

## Annex 2: Programme scoring and key data

### QIS scoring

#### Scoring methodology

For the scoring of the (intermediate) outcomes, generic qualitative information system (QIS) ladders have been drafted. For each Pathway of Change (PoCs), ladder are developed for each sub-indicator. The colour and score is determined by a participatory assessment of the programme stakeholders of the QIS indicator.

Crucial are the narratives for each ladder that provide the explanation (which sub-sector, which actors, sub-systems) and justification of the score.

The first scoring is done immediately after the programme Theory of Change is defined and this will be the baseline score.

Score range	Colour
88-100%	Green
63-87%	Light Green
38-62%	Yellow
13-37%	Orange
0-12%	Red

#### Building block scoring

The intermediate outcome “strong WASH building blocks” is measured by formulating for each building block four to six statements, which sector stakeholders will score in a participatory way with a short narrative and where possible and relevant providing the source of information.

Score range	Colour
4,26-5,0	Green
3,5-4,25	Light Green
2,6-3,4	Yellow
1,76-2,5	Orange
1,0-1,75	Red

#### National QIS Scoring

#### Burkina Faso

Country	Subsector	Description	2017	2018	2019	2020	2021	
Burkina Faso	Water	IN1: Political and Financial commitment	75	75	75	83	87	
		IN2: Strength Partnership	78	78	83	92	92	
		IN4: Strength Service Delivery Models	58	58	65	69	69	
		IN5: Strength capacities	47	47	50	67	67	
		Sanitation	IN1: Political and Financial commitment			75	67	67
		IN2: Strength Partnership			83	83	83	
		IN4: Strength Service Delivery Models			58	58	58	
		IN5: Strength capacities			50	67	67	
		Hygiene	IN1: Political and Financial commitment			70	25	25
			IN2: Strength Partnership			58	30	35
			IN4: Strength Service Delivery Models			42	25	25
			IN5: Strength capacities			50	37	28
		WASH in extra-hh settings	IN1: Political and Financial commitment			77	58	58
			IN2: Strength Partnership			50	42	60
			IN4: Strength Service Delivery Models			33	25	25
		IN5: Strength capacities			43	20	20	

#### District QIS Scoring

#### Burkina Faso

Country	Location	Description	2017	2018	2019	2020	2021
Burkina Faso	Banfora	ID1: Political and Financial commitment	33	33	56	87	87
		ID2: Strength Partnership	42	42	67	93	93
		ID4: Strength Service Delivery Models	47	47	61	75	80
		ID5: Strength capacities	27	27	43	68	68

#### National building blocks

#### Burkina Faso

Country	Subsector	BB category	2017	2018	2019	2020	2021
Burkina Faso	Water	Finance	2.6	2.6	2.6	2.8	2.8
		Infrastructure development	3.4	3.4	3.4	3.2	3.2
		Infrastructure management	3.3	3.3	3.3	3.6	3.6
		Institutional	3.0	3.0	3.0	3.0	3.0
		Learning and Adaptation	2.0	2.0	2.0	3.0	3.1
		Legislation	3.8	3.8	4.0	3.6	3.6
		Monitoring	2.6	2.6	2.6	3.4	3.4
		Planning	3.4	3.4	3.4	3.6	3.6
		Regulation	1.7	1.7	1.7	2.0	2.0

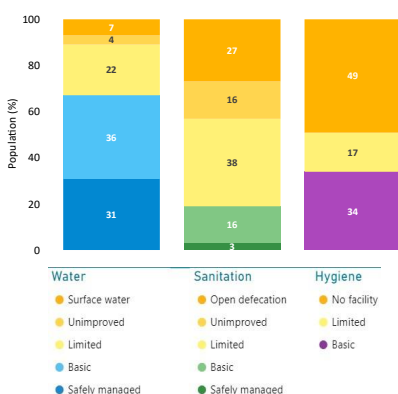
## Annex 2: Programme scoring and key data

Burkina Faso	Water	Water Resource Management	3.3	3.3	3.3	4.0	4.0
	Sanitation	Finance	2.8	2.8	2.8	2.6	2.6
Infrastructure development		3.4	3.4	3.4	3.4	3.4	
Infrastructure management		2.0	2.0	2.0	2.4	2.4	
Institutional		3.0	3.0	3.0	3.3	3.3	
Learning and Adaptation		2.0	2.0	2.0	2.6	2.6	
Legislation		3.5	3.5	3.5	3.5	3.5	
Monitoring		2.4	2.4	2.4	2.6	2.6	
Planning		3.2	3.2	3.4	3.4	3.4	
Regulation		1.0	1.0	1.0	1.0	1.0	
Water Resource Management		2.7	2.7	2.7	2.3	2.3	
Hygiene		Finance	2.0	2.0	2.0	2.0	2.0
	Infrastructure development						
	Infrastructure management						
	Institutional	3.0	3.0	3.0	3.0	3.0	
	Learning and Adaptation	2.0	2.0	2.0	2.0	2.0	
	Legislation	4.0	4.0	4.0	3.0	3.0	
	Monitoring	1.0	1.0	1.0	1.0	1.0	
	Planning	3.0	3.0	3.0	2.0	2.0	
	Regulation						
	Water Resource Management						
	WASH in extra-hh settings	Finance	2.0	2.0	2.0	3.7	
Infrastructure development							
Infrastructure management							
Institutional		2.0	2.0	1.5	3.7		
Learning and Adaptation		2.0	2.0	2.0	2.7		
Legislation		4.0	4.0	4.0	2.8		
Monitoring		3.0	3.0	3.0	3.0		
Planning		2.0	2.0	1.5	3.0		
Regulation							
Water Resource Management							
WASH away from home		Finance					
	Institutional						
	Learning and Adaptation						
	Legislation						
	Monitoring						
	Planning						

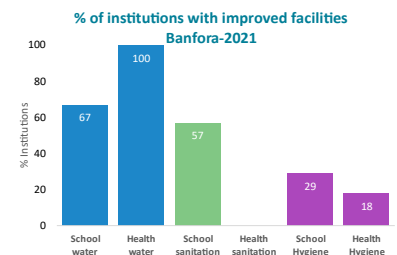
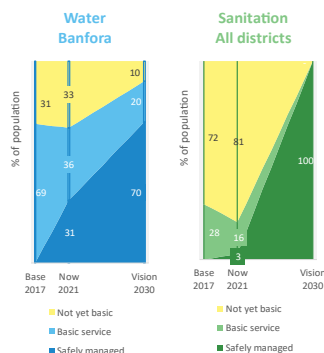
### District building blocks

Country	Location	BB category	2017	2018	2019	2020	2021
Burkina Faso	Banfora2	Finance	2.1	2.1	2.2	2.9	2.8
		Infrastructure development	2.4	2.4	3.5	3.3	3.3
		Infrastructure management	2.6	2.6	1.8	3.2	4.3
		Institutional	2.8	2.8	3.6	3.5	3.8
		Learning and Adaptation	3.5	3.5	3.6	4.0	4.1
		Legislation	2.7	2.7	3.3	3.7	4.0
		Monitoring	1.6	1.6	2.6	3.2	2.9
		Planning	2.0	2.1	3.9	4.7	4.6
		Regulation	2.0	2.0	3.8	2.6	2.6
		Water Resource Management	3.2	3.2		3.2	3.2

### Service levels



### Burkina Faso



## Annex 2: Programme scoring and key data

### National QIS Scoring

### Ethiopia

Country	Subsector	Description	2017	2018	2019	2020	2021
Ethiopia	Water	IN1: Political and Financial commitment	53	53	53		
		IN2: Strength Partnership	52	50	50		
		IN4: Strength Service Delivery Models	53	42	42		
		IN5: Strength capacities	29	22	22		
		IN1: Political and Financial commitment	30	25	25	75	75
	Sanitation	IN2: Strength Partnership	56	58	58	80	80
		IN4: Strength Service Delivery Models	58	75	75	82	82
		IN5: Strength capacities	34	30	30	62	62
		IN1: Political and Financial commitment	0	25	25	75	75
	Hygiene	IN2: Strength Partnership	0	58	58	80	80
		IN4: Strength Service Delivery Models	0	67	67	82	82
		IN5: Strength capacities	0	30	30	62	62
		IN1: Political and Financial commitment	46	50	50		
	WASH in extra-hh settings	IN2: Strength Partnership	61	62	62		
		IN4: Strength Service Delivery Models	31	42	42		
IN5: Strength capacities		36	38	38			

### District QIS Scoring

### Ethiopia

Country	Location	Description	2017	2018	2019	2020	2021
Ethiopia	Mille	ID1: Political and Financial commitment	12	12	12	28	30
		ID2: Strength Partnership	53	53	53	70	70
		ID4: Strength Service Delivery Models	48	38	33	50	50
		ID5: Strength capacities	20	20	20	25	25
		ID1: Political and Financial commitment	13	13	13	37	30
	South-Ari	ID2: Strength Partnership	53	53	53	77	77
		ID4: Strength Service Delivery Models	48	38	38	56	56
		ID5: Strength capacities	20	20	20	50	50

### National building blocks

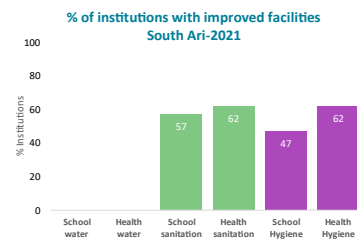
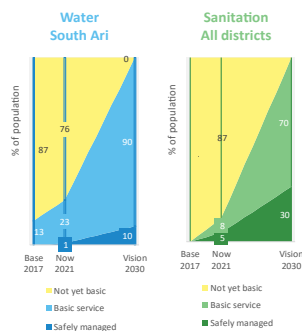
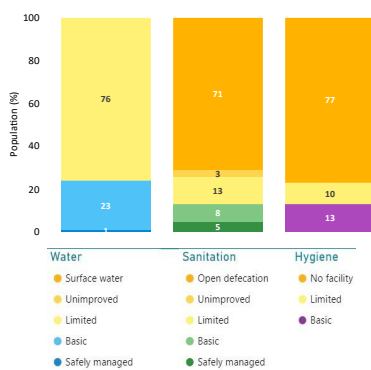
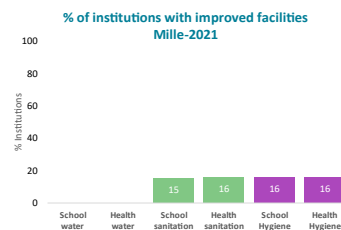
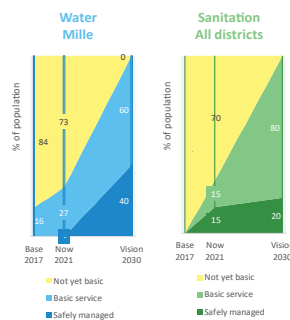
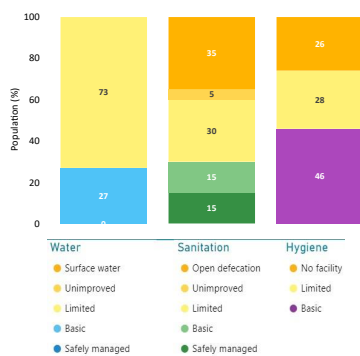
### Ethiopia

Country	Subsector	BB category	National Score					
			2017	2018	2019	2020	2021	
Ethiopia	Water	Finance	1.4	1.4	1.4	3.0	2.6	
		Infrastructure development	1.6	1.6	1.6	3.0	2.6	
		Infrastructure management	1.3	1.3	1.3	3.0	2.8	
		Institutional	2.5	2.5	2.5	3.0	2.5	
		Learning and Adaptation	1.8	1.8	1.8	3.0	2.0	
		Legislation	2.3	2.3	2.3	4.0	3.3	
		Monitoring	1.2	1.2	1.2	3.0	2.0	
		Planning	1.8	1.8	1.8	4.0	2.2	
		Regulation	1.0	1.0	1.0	2.0	1.7	
		Water Resource Management	1.7	1.7	1.7	3.0	2.7	
		Sanitation	Finance	4.0	4.0		3.0	3.0
			Infrastructure development	4.0	4.0		2.0	2.0
			Infrastructure management	1.0	1.0		2.0	2.0
			Institutional	4.0	4.0		3.0	3.0
			Learning and Adaptation	3.0	3.0		4.0	4.0
	Legislation		4.0	4.0		4.0	4.0	
	Monitoring		3.0	3.0		2.0	2.0	
	Planning		3.0	3.0		4.0	4.0	
	Regulation		0.0	0.0		2.0	2.0	
	Water Resource Management		3.0	3.0		2.0	2.0	
	Hygiene	Finance				3.0	3.0	
		Infrastructure development						
		Infrastructure management						
		Institutional				3.0	3.0	
		Learning and Adaptation				4.0	4.0	
		Legislation				4.0	4.0	
		Monitoring				3.0	3.0	
		Planning				4.0	4.0	
		Regulation						
		Water Resource Management						
	WASH in extra-hh settings	Finance	2.0	2.0		3.0		
		Infrastructure development						

## Annex 2: Programme scoring and key data

Ethiopia	WASH in extra-hh settings	Infrastructure management				
		Institutional	2.5	2.5		3.0
		Learning and Adaptation	2.5	2.5		3.0
		Legislation	3.0	3.0		4.0
		Monitoring	3.0	3.0		3.0
		Planning	2.0	2.0		4.0
		Regulation				
		Water Resource Management				
	WASH away from home	Finance				
		Institutional				
		Learning and Adaptation				
		Legislation				
		Monitoring				
		Planning				

		District Score					
Ethiopia	Mille	Finance	2.2	2.2	1.6	1.6	2.2
		Infrastructure development	1.0	1.0	1.3	2.5	2.0
		Infrastructure management	2.3	2.3	1.0	2.5	2.0
		Institutional	2.8	2.8	1.8	1.8	2.3
		Learning and Adaptation	1.0	1.0		3.0	1.4
		Legislation	1.3	1.3	2.0	3.5	1.3
		Monitoring	1.3	1.3	1.8	2.3	1.3
		Planning	1.6	1.6	1.3	3.5	2.2
		Regulation	1.0	1.0		2.0	1.3
		Water Resource Management	1.0	1.0		1.8	1.8
	South-Ari	Finance	2.2	2.2	1.8	1.5	
		Infrastructure development	1.0	1.3	1.5	2.5	
		Infrastructure management	2.3	2.3	1.1	2.5	
		Institutional	2.5	2.5	2.2	1.8	
		Learning and Adaptation	1.0	1.0		3.0	
		Legislation	1.7	1.7	1.4	3.5	
		Monitoring	1.5	1.5	1.8	2.0	
		Planning	1.6	1.6	1.6	3.5	
		Regulation	1.0	1.0		2.0	
		Water Resource Management	1.2	1.2		2.0	



## Annex 2: Programme scoring and key data

### National QIS Scoring

#### Ghana

Country	Subsector	Description	2017	2018	2019	2020	2021
Ghana	Water	IN1: Political and Financial commitment	50	78	62	77	75
		IN2: Strength Partnership	48	67	55	58	65
		IN4: Strength Service Delivery Models	55	55	58	62	65
		IN5: Strength capacities	50	50	80	80	80
		IN1: Political and Financial commitment	55	78	64	73	75
	Sanitation	IN2: Strength Partnership	53	67	55	60	65
		IN4: Strength Service Delivery Models	55	62	52	61	62
		IN5: Strength capacities	80	80	80	80	80
		IN1: Political and Financial commitment	53	78	59	77	75
		IN2: Strength Partnership	50	63	48	63	65
	Hygiene	IN4: Strength Service Delivery Models	50	50	48	63	63
		IN5: Strength capacities	80	80	80	80	80
		IN1: Political and Financial commitment					
		IN2: Strength Partnership					
		IN4: Strength Service Delivery Models					
WASH in extra-hh settings	IN5: Strength capacities						
	IN1: Political and Financial commitment						
	IN2: Strength Partnership						
	IN4: Strength Service Delivery Models						
	IN5: Strength capacities						

### District QIS Scoring

#### Ghana

#### Asutifi North

Country	Location	Description	2017	2018	2019	2020	2021
Ghana	Asutifi North	ID1: Political and Financial commitment	45	80	80	80	85
		ID2: Strength Partnership	38	87	78	78	80
		ID4: Strength Service Delivery Models	60	75	60	60	70
		ID5: Strength capacities	52	38	69	69	70

### National building blocks

#### Ghana

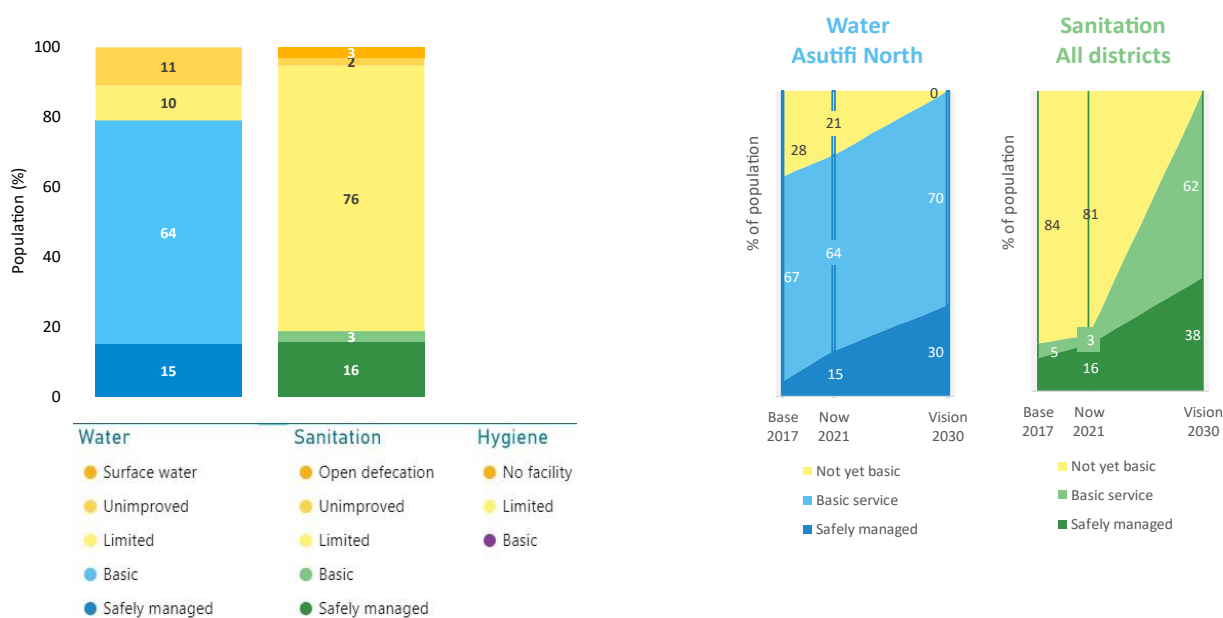
Country	Subsector	BB category	2017	2018	2019	2020	2021	
Ghana	Water	Finance	4.0	4.0	3.6	3.6	4.0	
		Infrastructure development	3.6	3.6	3.0	3.0	3.5	
		Infrastructure management	3.3	3.3	2.3	2.3	3.5	
		Institutional	3.5	3.5	3.8	3.8	4.0	
		Learning and Adaptation	3.3	3.3	3.4	3.4	3.0	
		Legislation	3.5	3.5	3.5	3.5	3.5	
		Monitoring	3.4	3.0	2.5	2.5	3.5	
		Planning	3.6	3.6	3.4	3.4	3.5	
		Regulation	3.0	3.0	3.5	3.5	3.5	
		Water Resource Management	3.3	3.3	3.3	3.3	3.5	
		Sanitation	Finance	3.4	3.4	3.5	3.5	3.5
			Infrastructure development	3.0	3.0	3.6	3.6	3.0
			Infrastructure management	2.5	2.5	2.9	2.9	3.0
			Institutional	3.5	3.5	3.4	3.4	4.0
			Learning and Adaptation	2.5	2.5	2.9	2.9	2.5
	Legislation		4.0	4.0	3.5	3.5		
	Monitoring		2.2	2.2	1.7	1.7	2.5	
	Planning		3.0	3.0	3.4	3.4	3.5	
	Regulation		3.0	3.0	2.8	2.8	3.5	
	Water Resource Management		3.3	3.3	2.8	2.8	3.5	
	Hygiene		Finance	3.0	3.0	2.0	2.0	3.0
			Infrastructure development					
			Infrastructure management					
			Institutional	3.0	3.0	3.0	3.0	4.0
			Learning and Adaptation	4.0	4.0	4.0	3.0	2.5
		Legislation	4.0	4.0	3.0	3.0		
		Monitoring	4.0	4.0	2.0	2.0		
		Planning	4.0	4.0	3.0	3.0	3.5	
		Regulation						
		Water Resource Management						
WASH in extra-hh settings		Finance	3.0	3.0				
		Infrastructure development						
		Infrastructure management						
		Institutional	2.0	2.0				
		Learning and Adaptation	3.0	3.0				
	Legislation	5.0	5.0					
	Monitoring	4.0	4.0					
	Planning	5.0	5.0					
	Regulation							

## Annex 2: Programme scoring and key data

Ghana	WASH in extra-hh settings	Water Resource Management					
	WASH away from home	Finance					
		Institutional					
		Learning and Adaptation					
		Legislation					
		Monitoring					
		Planning					

District building blocks		Ghana	District Score				
Country	Location	BB category	2017	2018	2019	2020	2021
Ghana	Asutifi North	Finance	3.6	3.6	2.5	3.4	3.4
		Infrastructure development	2.7	2.7	3.5	4.0	4.0
		Infrastructure management	1.5	1.5	2.8	4.0	3.5
		Institutional	3.6	3.7	3.4	3.7	3.8
		Learning and Adaptation	2.0	2.0	2.1	3.6	4.0
		Legislation	3.1	3.1	3.0	3.3	3.3
		Monitoring	1.0	1.0	3.1	3.2	3.3
		Planning	3.1	3.1	3.6	3.7	3.7
		Regulation	5.0	5.0	3.0	3.3	3.3
		Water Resource Management	5.0	5.0		1.6	1.6

## Service levels



## National QIS Scoring

## Honduras

Country	Subsector	Description	2017	2018	2019	2020	2021
Honduras	Water	IN1: Political and Financial commitment	52	52	60	63	60
		IN2: Strength Partnership	61	61	61	64	60
		IN4: Strength Service Delivery Models	62	62	62	63	60
		IN5: Strength capacities	47	48	56	56	42
	Sanitation	IN1: Political and Financial commitment	47	47	48	51	63
		IN2: Strength Partnership	60	60	60	63	64
		IN4: Strength Service Delivery Models	58	58	62	63	63
		IN5: Strength capacities	38	38	42	42	56
	Hygiene	IN1: Political and Financial commitment	43	43	47	47	51
		IN2: Strength Partnership	55	55	60	63	63
		IN4: Strength Service Delivery Models	58	58	62	62	63
		IN5: Strength capacities	43	43	42	42	42
	WASH in extra-hh settings	IN1: Political and Financial commitment	43	43	45	45	47
		IN2: Strength Partnership	55	55	60	60	63
		IN4: Strength Service Delivery Models	58	58	62	60	62
		IN5: Strength capacities	40	40	42	42	42

## Annex 2: Programme scoring and key data

District OIS Scoring		Honduras	(Multiple Items) Score				
Country	Location	Description	2017	2018	2019	2020	2021
Honduras	Camasca	ID1: Political and Financial commitment	57	57	60	60	60
		ID2: Strength Partnership	62	62	57	57	57
		ID4: Strength Service Delivery Models	43	43	55	55	55
		ID5: Strength capacities	39	39	47	47	47
		ID5: Strength capacities	39	39	33	33	33
	Candelaria	ID1: Political and Financial commitment	50	50	40	40	40
		ID2: Strength Partnership	42	50	53	53	53
		ID4: Strength Service Delivery Models	43	43	55	55	55
		ID5: Strength capacities	39	39	33	33	33
		ID5: Strength capacities	39	39	33	33	33
	Chinda	ID1: Political and Financial commitment	35	35	40	40	40
		ID2: Strength Partnership	42	42	53	53	53
		ID4: Strength Service Delivery Models	43	43	55	55	55
		ID5: Strength capacities	39	39	33	33	33
		ID5: Strength capacities	39	39	33	33	33
	Colomoncagua	ID1: Political and Financial commitment	40	40	40	40	40
		ID2: Strength Partnership	42	50	53	53	53
		ID4: Strength Service Delivery Models	43	43	55	55	55
		ID5: Strength capacities	39	39	33	33	33
		ID5: Strength capacities	39	39	33	33	33
	Dolores	ID1: Political and Financial commitment	75	75	60	60	60
		ID2: Strength Partnership	62	62	68	68	68
		ID4: Strength Service Delivery Models	60	60	66	66	66
		ID5: Strength capacities	60	63	47	49	49
		ID5: Strength capacities	60	63	70	71	71
	El Negrito	ID1: Political and Financial commitment	68	68	75	75	75
		ID2: Strength Partnership	62	62	68	68	68
		ID4: Strength Service Delivery Models	60	60	66	66	66
		ID5: Strength capacities	60	63	70	71	71
		ID5: Strength capacities	60	63	70	71	71
	Erandique	ID1: Political and Financial commitment	55	55	60	60	60
		ID2: Strength Partnership	42	50	57	57	57
		ID4: Strength Service Delivery Models	43	43	55	55	55
		ID5: Strength capacities	39	53	47	47	47
		ID5: Strength capacities	39	53	47	47	47
	Gualcinse	ID1: Political and Financial commitment	50	50	40	40	40
		ID2: Strength Partnership	42	50	53	53	53
		ID4: Strength Service Delivery Models	43	43	55	55	55
		ID5: Strength capacities	39	39	33	33	33
		ID5: Strength capacities	39	39	33	33	33
	Jesús de Otoro	ID1: Political and Financial commitment	65	65	75	75	75
		ID2: Strength Partnership	62	62	68	68	68
		ID4: Strength Service Delivery Models	60	60	66	66	66
		ID5: Strength capacities	60	63	70	71	71
		ID5: Strength capacities	60	63	70	71	71
Marcala	ID1: Political and Financial commitment	33	33	60	60	60	
	ID2: Strength Partnership	42	42	57	57	57	
	ID4: Strength Service Delivery Models	43	43	55	55	55	
	ID5: Strength capacities	39	53	47	49	49	
	ID5: Strength capacities	39	53	47	49	49	
Opatoro	ID1: Political and Financial commitment	0	0				
	ID2: Strength Partnership	42	42				
	ID4: Strength Service Delivery Models	43	43				
	ID5: Strength capacities	39	53				
	ID5: Strength capacities	39	53				
Piraera	ID1: Political and Financial commitment	37	37	40	40	40	
	ID2: Strength Partnership	42	50	53	53	53	
	ID4: Strength Service Delivery Models	43	43	55	55	55	
	ID5: Strength capacities	39	39	33	33	33	
	ID5: Strength capacities	39	39	33	33	33	
San Andrés	ID1: Political and Financial commitment	53	53	40	40	40	
	ID2: Strength Partnership	42	50	53	53	53	
	ID4: Strength Service Delivery Models	43	43	55	55	55	
	ID5: Strength capacities	39	39	33	33	33	
	ID5: Strength capacities	39	39	33	33	33	
San Antonio de Cortés	ID1: Political and Financial commitment	68	68	75	75	75	
	ID2: Strength Partnership	62	62	68	68	68	
	ID4: Strength Service Delivery Models	60	60	66	66	66	
	ID5: Strength capacities	60	63	70	73	73	
	ID5: Strength capacities	60	63	70	73	73	
San Matías	ID1: Political and Financial commitment	50	50	40	40	40	
	ID2: Strength Partnership	62	62	53	53	53	
	ID4: Strength Service Delivery Models	60	60	55	55	55	
	ID5: Strength capacities	60	63	33	33	33	
	ID5: Strength capacities	60	63	33	33	33	
Trojes	ID1: Political and Financial commitment	50	50	40	40	40	
	ID2: Strength Partnership	42	42	53	53	53	
	ID4: Strength Service Delivery Models	43	43	55	55	55	
	ID5: Strength capacities	39	39	30	33	33	
	ID5: Strength capacities	39	39	30	33	33	

## Annex 2: Programme scoring and key data

National building blocks		Honduras	National Score					
Country	Subsector	BB category	2017	2018	2019	2020	2021	
Honduras	Water	Finance	1.8	2.2	2.2	2.2	2.2	
		Infrastructure development	4.2	4.2	3.8	3.8	3.8	
		Infrastructure management	2.8	2.8	3.0	3.0	3.0	
		Institutional	2.8	2.8	2.4	3.5	3.5	
		Learning and Adaptation	2.5	3.3	3.3	4.0	4.0	
		Legislation	4.5	4.5	3.8	3.8	3.8	
		Monitoring	2.8	2.8	2.4	2.4	2.4	
		Planning	2.4	3.4	2.2	3.0	5.0	
		Regulation	3.7	3.7	1.3	3.0	3.0	
		Water Resource Management	3.0	3.0	2.7	2.7	2.7	
		Sanitation	Finance	1.8	1.8	2.2	2.2	2.2
			Infrastructure development	4.0	4.0	3.8	3.8	3.8
			Infrastructure management	3.0	3.0	2.8	2.8	2.8
			Institutional	2.5	2.5		2.5	2.5
	Learning and Adaptation		2.5	2.0	2.7	3.0	3.0	
	Legislation		4.0	4.0	3.8	3.8	3.8	
	Monitoring		1.6	1.6	2.4	2.4	2.5	
	Planning		2.4	3.4	3.4	3.4	5.0	
	Regulation		3.0	3.0	1.3	3.0	3.0	
	Water Resource Management		3.0	3.0	2.7	2.7	2.7	
	Hygiene		Finance	1.5	1.5	2.0	2.0	2.0
			Infrastructure development					
			Infrastructure management					
			Institutional	2.5	2.5	2.0	2.0	2.0
		Learning and Adaptation	2.0	2.0	2.0	3.0	3.0	
		Legislation	3.5	3.5	2.0	2.0	2.0	
		Monitoring	1.5	1.5	1.0	1.0	2.5	
		Planning	2.0	2.0	2.0	2.0	4.0	
		Regulation						
		Water Resource Management						
		WASH in extra-hh settings	Finance	2.0	2.0	1.0	1.0	
			Infrastructure development					
			Infrastructure management					
			Institutional	3.0	3.0	3.0		
	Learning and Adaptation		2.0	2.0	1.0	4.0		
	Legislation		2.0	2.0	2.0			
	Monitoring		2.0	2.0	2.0	2.0		
	Planning		2.0	2.0	2.0	3.0		
	Regulation							
	Water Resource Management							
	WASH away from home		Finance					2.0
			Institutional					2.0
Learning and Adaptation							3.0	
Legislation							2.0	
Monitoring						2.5		
Planning						4.0		

District building blocks		Honduras	District Score					
Country	Location	BB category	2017	2018	2019	2020	2021	
Honduras	Camasca	Finance	2.8	3.0	2.7	2.5	2.0	
		Infrastructure development	4.7	4.7	3.5	4.7	4.0	
		Infrastructure management	2.3	2.7	3.0	2.7	2.3	
		Institutional	3.8	3.8	2.7	3.1	3.0	
		Learning and Adaptation	1.2	1.2	1.9	1.6	1.7	
		Legislation	4.3	4.3	2.3	4.3	3.5	
		Monitoring	3.8	3.8	3.2	3.5	3.5	
		Planning	1.0	2.3	3.4	4.2	3.6	
		Regulation	2.5	2.5	1.3	2.5	2.5	
		Water Resource Management	2.8	2.8	2.4	2.8	2.8	
		Candelaria	Finance	1.0	1.0	1.2		1.0
			Infrastructure development	4.5	4.5	3.5		3.0
			Infrastructure management	1.8	1.8	2.3		1.8
			Institutional	1.2	1.2	1.8		1.4
	Learning and Adaptation		1.0	1.0	1.9		1.0	



## Annex 2: Programme scoring and key data

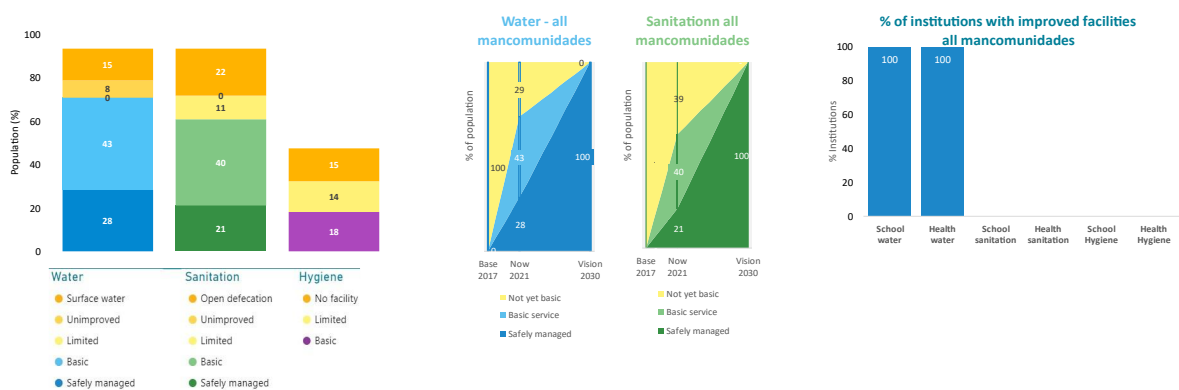
Honduras	Candelaria	Legislation	3.7	3.7	2.3		3.7	
		Monitoring	3.5	3.5	3.2		2.9	
		Planning	2.8	3.5	2.7		3.6	
		Regulation	1.3	1.3	1.0		1.0	
	Chinda	Water Resource Management	2.8	2.8	2.2		2.8	
		Finance	1.4	1.4	1.8	2.0	2.6	
		Infrastructure development	4.2	4.2	3.5	4.0	4.0	
		Infrastructure management	2.5	2.5	3.0		2.5	
		Institutional	1.7	1.7	2.1	1.5	2.0	
		Learning and Adaptation	1.0	1.0	1.9	2.0	3.0	
		Legislation	5.0	5.0	2.7	2.7	2.7	
		Monitoring	4.5	4.5	4.9	4.8	4.8	
		Planning	1.8	1.8	2.3	1.0	1.0	
		Regulation	1.5	1.5	2.0	1.5	1.5	
		Colomoncagua	Water Resource Management	2.8	2.8	2.4	2.8	2.8
			Finance	1.0	1.0	1.2		1.0
			Infrastructure development	4.2	4.2	3.5		3.0
	Infrastructure management		1.8	1.8	2.8		1.8	
	Institutional		1.2	1.2	1.8		1.4	
	Learning and Adaptation		1.0	1.0	1.9		1.0	
	Legislation		1.3	1.3	2.3		1.2	
	Monitoring		3.5	3.5	3.2		2.9	
	Planning		1.8	3.9	2.7		1.0	
	Regulation		1.3	1.3	1.0		1.0	
	Dolores		Water Resource Management	2.6	2.6	2.2		2.6
			Finance	3.4	3.2	2.8	3.0	3.3
			Infrastructure development	4.7	4.7	3.5	4.7	4.7
		Infrastructure management	2.3	2.7	3.0	2.7	4.0	
		Institutional	4.3	4.3	2.6	3.3	3.3	
		Learning and Adaptation	1.1	1.1	1.9	1.4	1.6	
		Legislation	4.3	4.3	2.3	2.3	2.3	
		Monitoring	1.0	1.0	1.0	1.0	1.0	
		Planning	1.8	1.8	3.0	1.0	1.0	
		Regulation	1.8	1.8	1.0	1.8	1.8	
		El Negrito	Water Resource Management	3.0	3.0	2.2	3.0	3.0
			Finance	2.6	3.4	3.0	3.0	3.8
			Infrastructure development	4.5	4.5	3.5	4.5	4.7
	Infrastructure management		3.3	3.4	3.8	3.3	4.0	
	Institutional		1.3	1.4	2.8	4.0	3.8	
	Learning and Adaptation		1.2	1.2	2.1	1.3	3.0	
	Legislation		5.0	5.0	3.0	5.0	5.0	
	Monitoring		4.9	4.9	4.9	4.9	5.0	
	Planning		4.2	4.2	3.0	5.0	5.0	
	Regulation		3.5	3.5	2.3	3.5	3.5	
	Erandique		Water Resource Management	3.0	3.0	2.8	4.0	3.0
			Finance	1.4	1.6	1.5		1.8
			Infrastructure development	4.3	4.3	3.5		3.0
Infrastructure management		2.0	2.2	2.8		2.2		
Institutional		1.3	1.4	1.7		1.8		
Learning and Adaptation		1.1	1.1	1.9		1.2		
Legislation		4.3	4.3	2.3		4.3		
Monitoring		3.5	3.5	3.2		2.9		
Planning		3.9	3.9	2.7		3.6		
Regulation		1.3	1.3	1.0		1.0		
Gualcinse		Water Resource Management	2.6	2.6	2.2		2.6	
		Finance	1.2	1.2	1.2		1.3	
		Infrastructure development	4.3	4.3	3.5		3.0	
	Infrastructure management	1.8	1.8	2.3		1.8		
	Institutional	1.8	1.8	2.1		2.0		
	Learning and Adaptation	1.0	1.0	1.9		1.0		
	Legislation	3.7	3.7	2.3		3.7		
	Monitoring	3.5	3.5	3.1		2.9		
	Planning	3.9	3.9	2.7		3.6		
	Regulation	1.3	1.3	1.0		1.0		
	Jesús de Otoro	Water Resource Management	2.6	2.6	2.2		2.6	
		Finance	2.8	2.8	3.0		2.8	
		Infrastructure development	4.7	4.7			4.0	
Infrastructure management		2.8	2.8			2.8		
Institutional		2.8	2.8			2.6		

## Annex 2: Programme scoring and key data

Honduras	Jesús de Otoro	Learning and Adaptation	1.2	1.2	2.0		1.6	
		Legislation	5.0	5.0			4.0	
		Monitoring	3.2	3.2	1.0		3.4	
		Planning	4.5	4.5	2.0		3.5	
		Regulation	3.3	3.3			1.0	
	Marcala	Water Resource Management	3.2	3.2			3.2	
		Finance	1.8	2.0	1.8	1.8	2.3	
		Infrastructure development	4.5	4.5	3.5	4.5	4.3	
		Infrastructure management	2.0	2.3	2.8	2.0	3.5	
		Institutional	2.2	2.2	2.2	2.4	3.0	
		Learning and Adaptation	1.0	1.0	1.9	1.0	3.0	
		Legislation	2.7	2.7	2.3	2.7	3.0	
		Monitoring	2.9	2.9	3.8	4.0	4.3	
		Planning	1.0	1.0	3.0	1.0	3.0	
		Regulation	1.3	1.3	1.5	1.3	3.0	
		Opatoro	Water Resource Management	2.8	2.7	2.4	2.8	3.0
			Finance		2.5			
	Infrastructure development							
	Infrastructure management			2.5				
	Institutional			2.0				
	Learning and Adaptation							
	Legislation							
	Monitoring							
	Planning							
	Regulation							
	Piraera	Water Resource Management						
		Finance	1.4	1.4	1.5		1.0	
Infrastructure development		4.3	4.3	3.5		3.0		
Infrastructure management		1.8	1.8	2.3		1.8		
Institutional		1.2	1.2	1.8		1.4		
Learning and Adaptation		1.0	1.0	1.9		1.0		
Legislation		3.7	3.7	2.3		3.7		
Monitoring		3.5	3.5	3.1		2.9		
Planning		3.9	3.9	2.7		3.6		
Regulation		1.3	1.3	1.0		1.0		
San Andrés		Water Resource Management	2.6	2.6	2.2		2.6	
		Finance	1.0	1.0	1.2		1.0	
	Infrastructure development	4.5	4.5	3.5		3.0		
	Infrastructure management	1.8	1.8	2.3		1.8		
	Institutional	1.2	1.2	1.8		1.4		
	Learning and Adaptation	1.0	1.0	1.9		1.0		
	Legislation	3.7	3.7	2.3		3.4		
	Monitoring	3.5	3.5	3.1		2.9		
	Planning	3.9	3.9	2.7		3.6		
	Regulation	1.3	1.3	1.0		1.0		
	San Antonio de Cortés	Water Resource Management	2.6	2.6	2.2		2.6	
		Finance	2.6	3.4	3.7	4.0	3.8	
Infrastructure development		4.7	4.7	3.5	4.7	4.7		
Infrastructure management		3.3	3.4		3.3	4.0		
Institutional		1.3	1.4	2.8	3.0	3.0		
Learning and Adaptation		1.2	1.2	2.1	1.3	3.0		
Legislation		5.0	5.0	3.0	5.0	5.0		
Monitoring		4.9	4.9	4.6	5.0	5.0		
Planning		4.2	4.2	3.0	5.0	5.0		
Regulation		3.5	3.5	2.3	3.5	3.5		
San Matías		Water Resource Management	3.0	3.0	3.0	3.0	3.0	
		Finance	1.6	1.6	1.5		1.3	
	Infrastructure development	4.7	4.7	3.5		3.0		
	Infrastructure management	2.3	2.3	2.5		2.3		
	Institutional	1.2	1.2	1.8		1.4		
	Learning and Adaptation	1.1	1.1	1.9		1.4		
	Legislation	2.7	2.7	2.3		2.4		
	Monitoring	3.9	3.9	3.3		3.4		
	Planning	1.0	1.0	2.3		3.5		
	Regulation	1.3	1.3	1.0		1.0		
	Trojes	Water Resource Management	3.0	3.0	2.4		3.0	
		Finance	1.6	1.6	1.5		1.3	
Infrastructure development		4.0	4.0	3.5		3.0		
		Infrastructure management	1.8	1.8	2.3		1.8	

## Annex 2: Programme scoring and key data

Honduras	Trojes	Institutional	1.9	1.9	2.1	1.9
		Learning and Adaptation	1.0	1.0	1.9	1.3
		Legislation	3.0	3.0	2.3	3.0
		Monitoring	2.8	2.8	3.2	2.8
		Planning	1.0	1.0	2.3	3.5
		Regulation	1.3	1.3	1.0	1.0
		Water Resource Management	2.6	2.6	2.2	2.6
	Oulodo	Finance				
		Infrastructure development				
		Infrastructure management				
		Institutional				
		Learning and Adaptation				
		Legislation				
		Monitoring				
		Planning				
		Regulation				
		Water Resource Management				



## Annex 2: Programme scoring and key data

### National building blocks

### India

Country	Subsector	BB category	National Score					
			2017	2018	2019	2020	2021	
India	Water	Finance	3.0	3.0		3.5	3.5	
		Infrastructure development	2.8	2.8		2.8	3.0	
		Infrastructure management	1.5	1.5		2.0	2.5	
		Institutional	3.5	3.5		3.5	3.5	
		Learning and Adaptation	2.8	2.8		3.5	3.5	
		Legislation	3.5	3.5		4.0	4.0	
		Monitoring	2.6	2.6		3.0	3.0	
		Planning	3.0	3.0		3.0	3.0	
		Regulation	2.3	2.3		2.5	3.0	
		Water Resource Management	2.7	2.7		3.5	3.5	
		Sanitation	Finance	3.0	3.0		3.0	3.0
			Infrastructure development	3.2	3.2		3.2	3.0
	Infrastructure management		2.3	2.3		2.3	2.3	
	Institutional		3.5	3.5		3.5	3.5	
	Learning and Adaptation		2.5	2.5		3.5	3.5	
	Legislation		4.0	4.0		4.0	4.0	
	Monitoring		3.2	3.2				
	Planning		3.0	3.0		3.0	3.0	
	Regulation		2.7	2.7		2.5	3.0	
	Water Resource Management		2.0	2.0		2.5	3.0	
	Hygiene		Finance	0.0	0.0		2.0	2.5
			Infrastructure development					
		Infrastructure management						
		Institutional	2.0	2.0		2.0	2.0	
		Learning and Adaptation	1.0	1.0		2.0	2.5	
		Legislation	0.0	0.0		0.0		
		Monitoring	0.0	0.0		2.0	2.0	
		Planning	0.0	0.0		0.0	2.0	
		Regulation						
		Water Resource Management						
		WASH in extra-hh settings	Finance	2.5	2.5		2.5	
			Infrastructure development					
	Infrastructure management							
Institutional	4.0		4.0		1.0			
Learning and Adaptation	2.0		2.0		2.0			
Legislation	4.0		4.0		0.0			
Monitoring	2.5		2.5		0.0			
Planning	2.0		2.0		2.0			
Regulation								
Water Resource Management								
WASH away from home	Finance						2.0	
	Institutional							
	Learning and Adaptation					2.0		
	Legislation					3.0		
	Monitoring					2.0		
	Planning					1.0		

### District/State building blocks

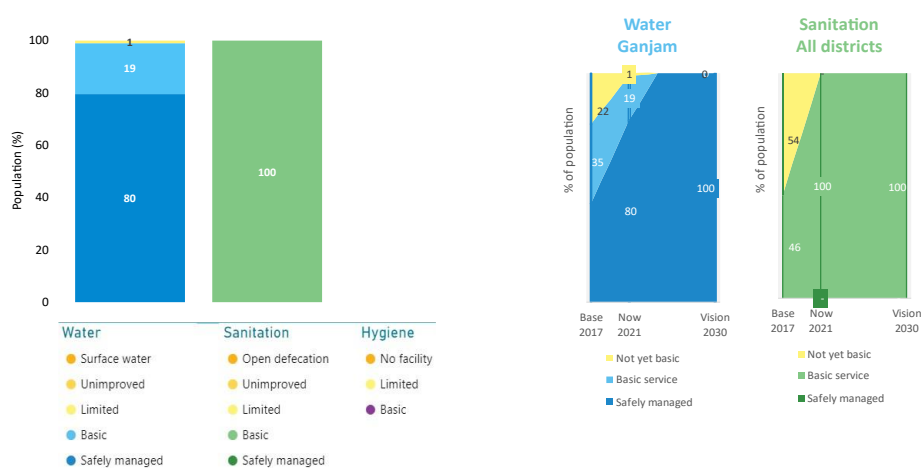
### India

Country	Location	BB category	District Score				
			2017	2018	2019	2020	2021
India	Ganjam	Finance	2.0	2.0	2.4	3.1	2.9
		Infrastructure development	2.5	2.5	2.5	3.0	3.0
		Infrastructure management	2.3	2.3		2.5	2.5
		Institutional	2.3	2.3	2.7	2.3	2.7
		Learning and Adaptation	1.9	1.9		2.3	2.3
		Legislation	2.5	2.5		1.5	3.0
		Monitoring	2.4	2.4		2.0	1.8
		Planning	2.4	2.4	2.7	2.7	2.8
		Regulation	2.0	2.0		2.0	2.0
		Water Resource Management	1.1	1.1		2.0	2.5

## Annex 2: Programme scoring and key data

### Service levels

### India



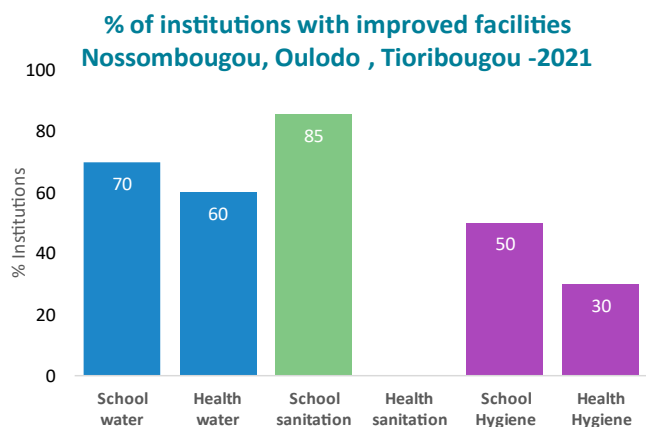
### OIS and BB Scoring

### Mali

Not yet conducted

### Service levels

### Mali



### National OIS Scoring

### Niger

Country	Subsector	Description	2020
Niger	Water	IN1: Political and Financial commitment	83
		IN2: Strength Partnership	92
		IN4: Strength Service Delivery Models	100
		IN5: Strength capacities	83
		IN5: Strength capacities	83
	Sanitation	IN1: Political and Financial commitment	83
		IN2: Strength Partnership	92
		IN4: Strength Service Delivery Models	75
		IN5: Strength capacities	83
		IN5: Strength capacities	83
	Hygiene	IN1: Political and Financial commitment	92
		IN2: Strength Partnership	92
		IN4: Strength Service Delivery Models	100
		IN5: Strength capacities	83
		IN5: Strength capacities	83
WASH in extra-hh settings	IN1: Political and Financial commitment	83	
	IN2: Strength Partnership	92	
	IN4: Strength Service Delivery Models	100	
	IN5: Strength capacities	83	
	IN5: Strength capacities	20	

## Annex 2: Programme scoring and key data

### National building blocks

### Niger

Country	Subsector	BB category	2020	2021	
Niger	Water	Finance	4.3		
		Infrastructure development	5.0		
		Infrastructure management	4.3		
		Institutional	4.0		
		Learning and Adaptation	4.4		
		Legislation	4.0		
		Monitoring	5.0		
		Planning	4.5		
		Regulation	5.0		
		Water Resource Management	5.0		
		Sanitation	Finance	3.6	
			Infrastructure development	5.0	
			Infrastructure management	2.4	
			Institutional	4.5	
	Learning and Adaptation		4.3		
	Legislation		4.8		
	Monitoring		4.0		
	Planning		4.5		
	Regulation		1.5		
	Water Resource Management		5.0		
	Hygiene	Finance	2.0		
		Institutional	4.0		
		Learning and Adaptation	3.0		
		Legislation	5.0		
		Monitoring	2.0		
		Planning	5.0		
	WASH in extra-hh settings	Finance	5.0		
		Institutional	5.0		
		Learning and Adaptation	4.5		
		Legislation	2.0		
		Monitoring	5.0		
	WASH away from home	Finance	5.0		
		Institutional	5.0		
		Learning and Adaptation	5.0		
		Legislation	5.0		
		Monitoring	5.0		
		Planning	5.0		

## Annex 2: Programme scoring and key data

### National QIS Scoring

### Uganda

Country	Subsector	Description	2017	2018	2019	2020	2021
Uganda	Water	IN1: Political and Financial commitment	45	58	62	65	60
		IN2: Strength Partnership	60	60	60	65	65
		IN4: Strength Service Delivery Models	50	42	50	65	70
		IN5: Strength capacities	58	80	44	70	
		IN1: Political and Financial commitment	33	48	50	60	65
	Sanitation	IN2: Strength Partnership	43	60	55	65	65
		IN4: Strength Service Delivery Models	25	42	35	60	65
		IN5: Strength capacities	50	80	35	70	70
		IN1: Political and Financial commitment	33	33	35	60	60
		IN2: Strength Partnership	33	33	60	65	65
	Hygiene	IN4: Strength Service Delivery Models	25	25	25	60	60
		IN5: Strength capacities	50	80	47	70	70
		IN1: Political and Financial commitment	40	40	40	60	60
		IN2: Strength Partnership	43	43	60		65
		IN4: Strength Service Delivery Models	25	25	39	70	60
WASH in extra-hh settings	IN5: Strength capacities	50	50	42	70	70	

### District QIS Scoring

### Uganda

### Kabarole

Country	Location	Description	2017	2018	2019	2020	2021
Uganda	Kabarole	ID1: Political and Financial commitment	33	63	55	75	30
		ID2: Strength Partnership	61	73	50	78	78
		ID4: Strength Service Delivery Models	40	62	71	80	80
		ID5: Strength capacities	35	52	64	75	75

### National building blocks

### Uganda

Country	Subsector	BB category	National Score					
			2017	2018	2019	2020	2021	
Uganda	Water	Finance	1.4	1.4	2.4	3.5	3.5	
		Infrastructure development	2.5	2.5	3.0			
		Infrastructure management	3.0	3.5	2.8			
		Institutional	4.8	4.8	4.0	3.8	3.8	
		Learning and Adaptation	4.0	4.0	4.0			
		Legislation	4.0	4.0	4.3			
		Monitoring	3.5	3.5	3.0	3.5	3.5	
		Planning	2.6	2.6	3.0	4.5	4.5	
		Regulation	3.0	3.0	3.7	4.0	4.0	
		Water Resource Management	4.0	4.0	4.0			
		Sanitation	Finance	1.8	1.3	1.8	3.5	3.5
			Infrastructure development	2.3	2.3	1.8		
			Infrastructure management	3.3	3.3	2.0		
			Institutional	3.8	3.8	3.3	3.5	3.5
			Learning and Adaptation	2.3	2.0	2.0		
	Legislation		4.3	4.0	3.8	4.5	4.5	
	Monitoring		3.2	2.2	2.6	3.5	3.5	
	Planning		2.2	2.2	2.6	4.5	4.5	
	Regulation		2.0	2.0	2.0	4.0	4.0	
	Water Resource Management		2.0	3.0	3.0			
	Hygiene		Finance	2.0	2.0			
			Infrastructure development					
		Infrastructure management						
		Institutional	2.0	2.0		3.5	3.5	
		Learning and Adaptation	2.0	2.0				
		Legislation	4.0	4.0				
		Monitoring	2.0	2.0		3.5	3.5	
		Planning	3.0	3.0		3.8	3.8	
		Regulation						
		Water Resource Management						
	WASH in extra-hh settings	Finance	3.0	3.0				
		Infrastructure development						
		Infrastructure management						
Institutional		4.0	4.0		3.8			
Learning and Adaptation		2.0	2.0					
Legislation		4.5	4.5					

## Annex 2: Programme scoring and key data

Uganda	WASH in extra-hh settings	Monitoring	2.5	2.5		3.5
		Planning	3.0	3.0		3.8
		Regulation				
		Water Resource Management				
	WASH away from home	Finance				
		Institutional				
		Learning and Adaptation				
		Legislation				
		Monitoring				
		Planning				

### District building blocks

### Uganda

Country	Subsector	BB category	District Score				
			2017	2018	2019	2020	2021
Uganda	Water	Finance	2.0	2.7	2.8	3.2	3.2
		Infrastructure development	2.3	2.7	3.0	3.7	3.7
		Infrastructure management	2.0	2.0	2.8	3.4	
		Institutional	2.3	3.0	2.3	3.8	3.8
		Learning and Adaptation	3.0	3.2	3.6	4.8	4.8
		Legislation	2.3	4.0	2.0	3.5	3.5
		Monitoring	3.0	2.8	3.0	4.0	4.0
		Planning	4.0	4.0	3.2	4.1	4.1
		Regulation	3.0	3.0		4.1	4.1



## Annex 2: Programme scoring and key data

Uganda	Water	Water Resource Management	2.5	2.6		3.0	3.0	
	Sanitation	Finance	1.5	1.5		3.9	3.9	
		Infrastructure development	2.3	3.0	3.0	2.8	2.8	
		Infrastructure management	1.5	1.5	1.0	2.9		
		Institutional	3.1	2.8	2.0	3.3	3.3	
		Learning and Adaptation	2.8	3.3	3.5	4.0	4.0	
		Legislation	1.7	2.2	1.3	2.9	2.9	
		Monitoring	2.3	2.1	2.0	3.3	3.3	
		Planning	3.0	2.7	0.0	4.0	4.0	
		Regulation	1.5	1.5		4.0	4.0	
		Water Resource Management	2.0	1.8		4.0	4.0	
		Hygiene	Finance	1.0	1.0		3.5	3.5
			Infrastructure development					
			Infrastructure management					
			Institutional	1.0	1.0		3.3	3.3
	Learning and Adaptation		4.0	4.0		3.8	3.8	
	Legislation					4.0	4.0	
	Monitoring					4.0	4.0	
	Planning		1.0	1.0		4.0	4.0	
	Regulation							
	Water Resource Management							
	WASH in extra-hh settings	Finance	2.0	2.0		3.0		
		Infrastructure development						
		Infrastructure management						
		Institutional	3.0	3.0		3.5		
		Learning and Adaptation	2.0	2.0		3.5		
		Legislation				3.5		
		Monitoring	2.0	2.0		3.0		
		Planning	1.5	1.5		3.8		
		Regulation						
		Water Resource Management						
	WASH away from home	Finance						
		Institutional						
		Learning and Adaptation						
		Legislation						
		Monitoring						
		Planning						

